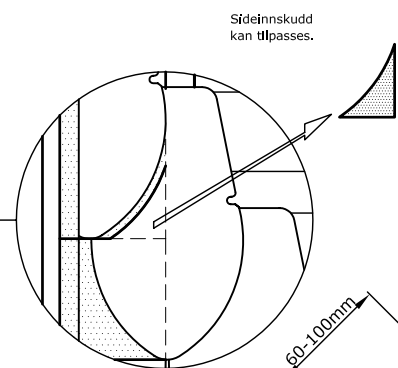
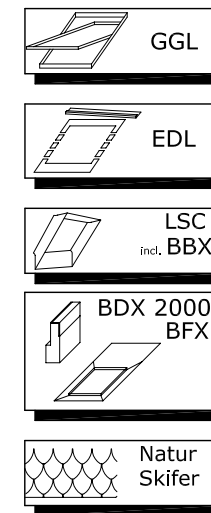


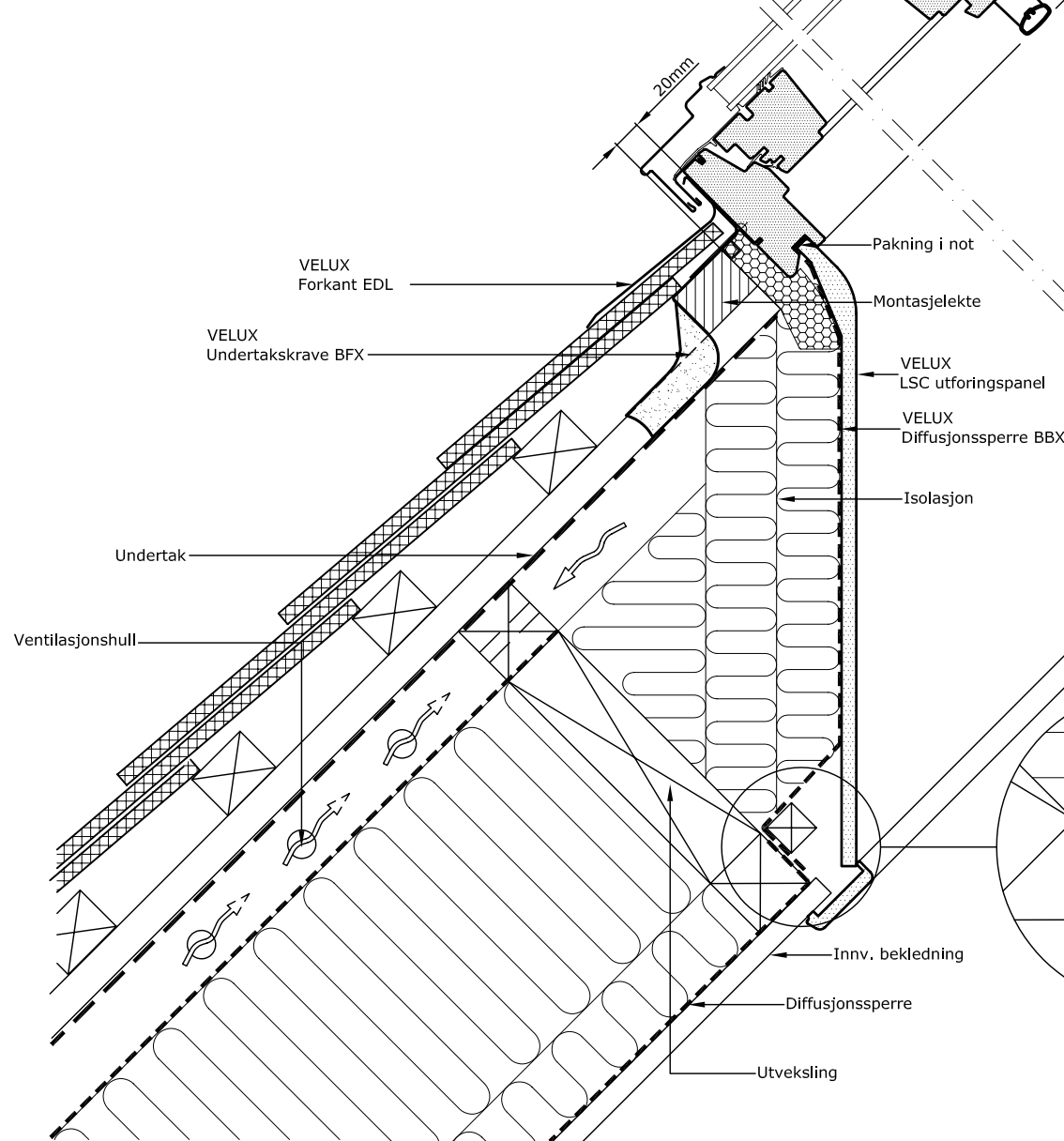
Skisse vinkelrett på tak
1:20



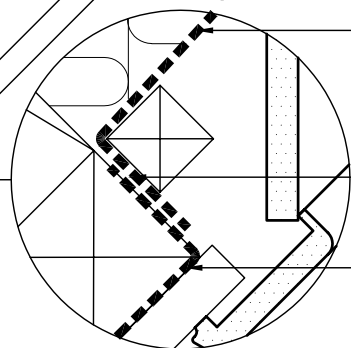
Sideinnskudd kan tilpasses.



Snitt A-A
1:5

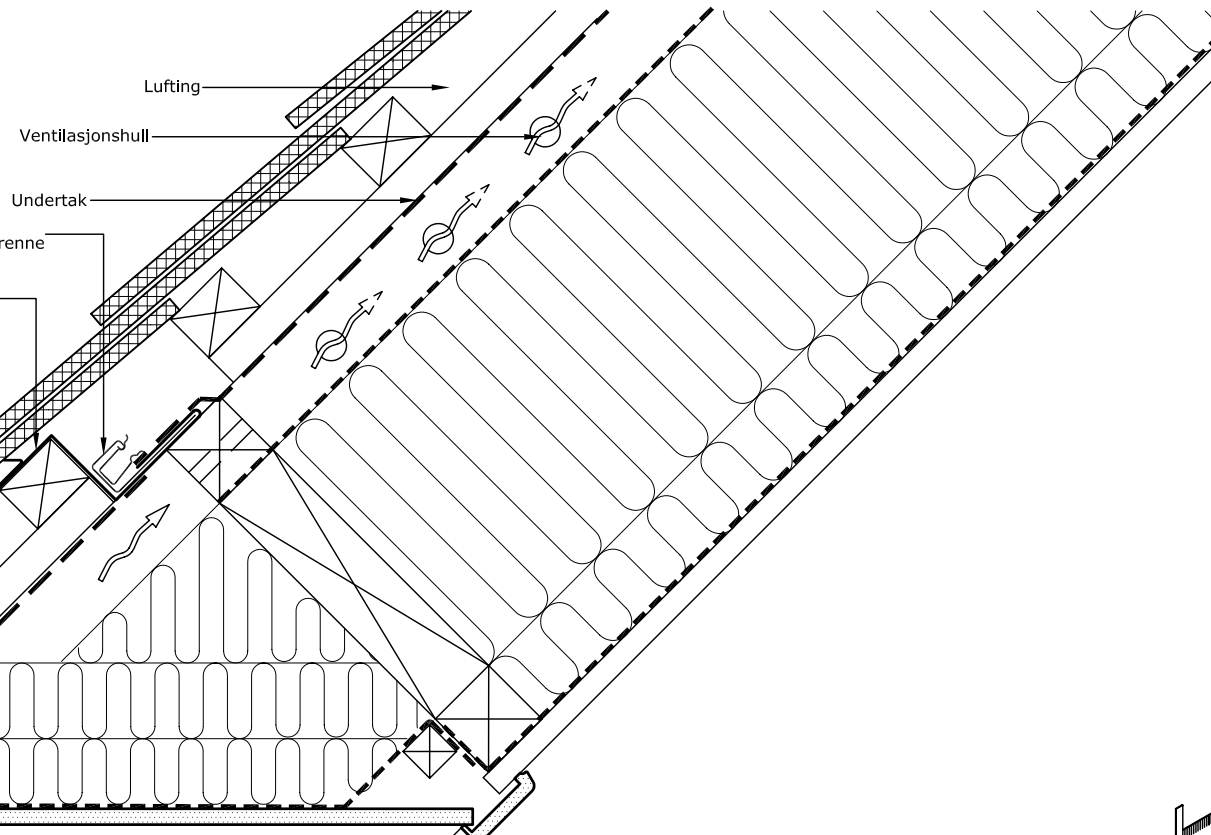


1:2.5

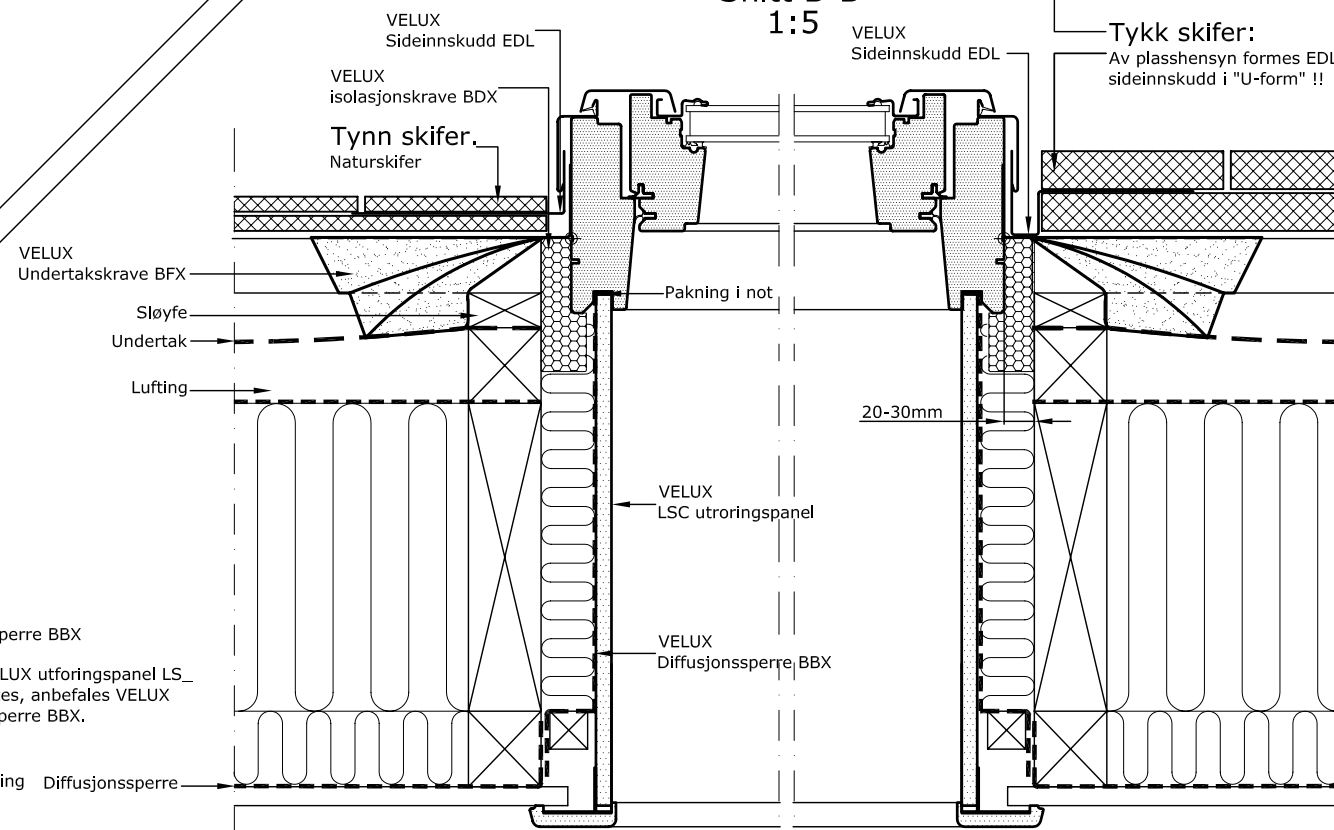


VELUX Diffusjonssperre BBX
Merk:
Dersom VELUX utforingspanel LS_ ikke benyttes, anbefales VELUX diffusjonssperre BBX.

Merk:
VELUX takvinduer skal monteres ihht. NBI Byggforskerien. Likeledes skal det angående materialer og/eller konstruksjoner, som berører disse, henvises til produsentens anvisninger.



Snitt B-B
1:5



© VELUX GROUP ® VELUX, VELUX logo are registered trademarks



VELUX A/S
Product Management
Installation support

VELUX takvindu type GGL montert i skifer med inndekning type EDL. VELUX isolasjonskrave BDX, undertakskrave BFX, utforingspanel LSC og diffusjonssperre BBX.

Date	File name	Drawing no.
24.01.06	A_000328-A	10.04
All measurement in mm		
SCo VELUX Norge AS		